

# Big Green Egg MiniMax Table

Here is my plan for a table my father and I built to give my MiniMax a home.  
This table allows you to leave the MiniMax in the carrier.



# Materials List

Item	Quantity	Store	Item Number	Price (Each)	Total
1x4x6 (Oak)	6	Menards	1042740	10.99	65.94
1x4x10 (Oak)	1	Menards	1042805	18.39	18.39
1x3x10 (Oak)	1	Menards	1043846	12.69	12.69
1 1/4 Stainless Wood Screws (45 per box)	2	Lowe's	755693	7.78	15.56
2 1/2 x 2 1/2 Posts (Oak)	4	Lowe's	296944	21.55	86.2
220 Grit Sandpaper	1	Menards	2368119	5.69	5.69
Outdoor Polyurethane	1	Menards	5553847	15.99	15.99
Tack Cloth	3	Menards	5613502	0.97	2.91
Foam Brush	4	Menards	5618044	0.57	2.28
Countersink Bit	1	Menards	2360201	9.99	9.99
Butcher Block top 24x48 (Oak)	1	Menards	1048600	99.99	99.99
Tee Nut	4	Lowe's	880541	1.04	4.16
Caster	4	Lowe's	235528	6.97	27.88
#6 x .75 Stainless Screw (10 Per Package)	2	Lowe's	150740	1.54	3.08
Outdoor Wood Glue	1	Menards	780093	3.78	3.78
Wood Filler (Red Oak Color)	1	Menards	5554669	3.49	3.49
Varathane Exterior Polyurethane (Semi-Gloss)	2	Menards	5553843	8.97	17.94
				<b>Grand total</b>	<b>395.96</b>

## Tools

Router (Router table makes it easier)

Rounding Router Bit

Straight-Cutting Router Bit

Drill

Countersink Bit

3/8 drill Bit (For Caster Holes)

Brad Nailer (for Shelves)

Sandpaper

Foam Brushes

Drop Cloth

Tack Cloths

Clamps (Aid when screwing posts)

Jig Saw & Blades

Miter Saw

Kreg Jig

Circular Saw (For Top)

# Specs

- Top 41x24 (1 1/2" thick) with 7" radius
- Top Wrap 1x3 boards (Front 32" long, Sides 18 1/2" long)
- Middle and Bottom Wrap 1x4 boards (Front 32" long, Sides 18 1/2" long)
- Middle and Bottom Wrap has (2) 1x4 braces spaced equally apart
- Top has 1 wrap situated just to the right of the hole
- Shelf boards are 1x4 (33" long which provides 1/2 overhang all around)
- Hole is 16 3/8 diameter
- Legs are 27" long
- 3" casters (3 1/2" from floor to bottom of leg)
- distance between bottom of the top to the top of the first shelf 5 5/8" (based on 1 1/2" thick top this gives a 3/4" gap between the table top and the carrier handles so you can get your hand under them to lift out)
- distance from the bottom of the top shelf wrap to the top of the bottom shelf 10 1/2"

# Instructions

**A few things may be out of order as I forgot to router the notch for the hinge until after the table was built but the instructions are still accurate.**

1. Start with the top. Using a circular saw cut it to 41". Then measure in 7" on each corner and use the minimax carrier (upside down) to make the radius. After that cut the hole in the top.
2. Now you can router the notch (For the hinge). The notch is 1" down, 8 3/4 wide and 3 1/2 deep.
3. Attach the top wrap to the top using a Kreg jig and stainless screws. This guarantees the alignment and where to place the center brace. The wrap is brad nailed & glued on the edges.
4. Next step is to screw the posts to the top wrap. (router the bottom edge of the posts for a finished look). This is done with the countersink bit putting 2 screws on each edge for strength. Clamp the posts to the wrap to ensure they are tight)
5. Afterword's build the wraps for the top and bottom shelves (glued and brad nailed). These are slid onto the posts from the bottom but not screwed yet.

6. Next, screw the bottom shelf wrap in place (but not the top shelf)
7. Cut all the shelf boards and router the edges of all the boards.
8. Then brad nail the top shelf boards on (do this prior to screwing in as there will not be enough room for the brad nailer.
9. After the shelf boards are attached to the top shelf slide it up in place and screw the wrap to the posts.
10. Now nail the shelf boards on bottom shelf.
11. Then simply flip the table over and drill the holes for the casters (tee nuts), screw in the tee nuts and screw in the casters.
12. Last step is router the top with the same rounded edge used on the shelf boards.
13. Then just sand and finish.







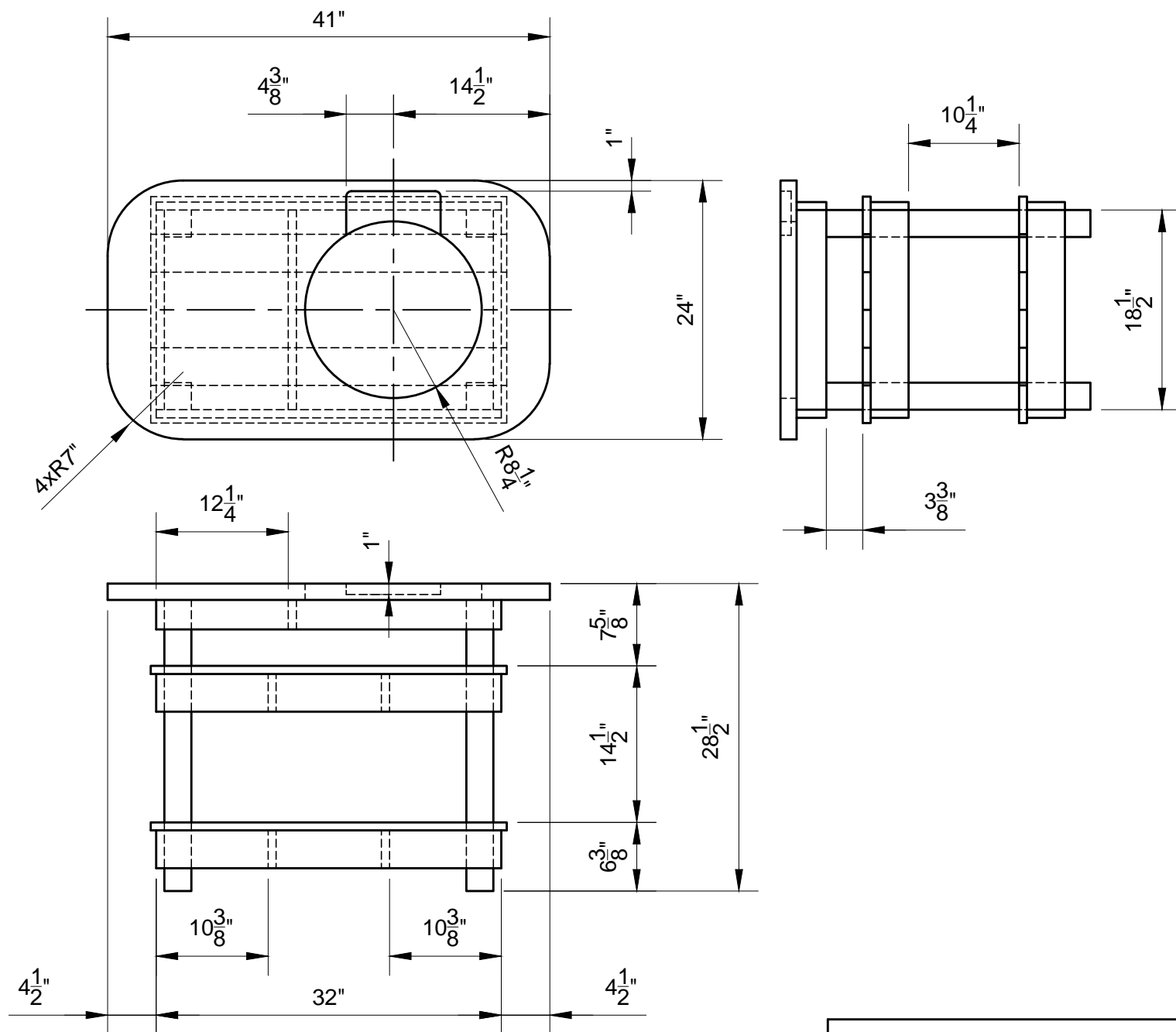












MiniMax Big Green Egg Oak Table